

# **Industrial Stormwater Multi-sector General Permit**

## **Upper Midwest Auto & Truck Recyclers Convention**

Melissa Wenzel, Industrial Stormwater Program

April 28, 2012



Minnesota Pollution  
Control Agency

# Overview

- Permit requirements & deadlines
- Stormwater Pollution Prevention Plan
- Best Management Practices
- Collecting stormwater samples
- Managing exceedances
- Filling out forms & where to go for help

# Permittees

3510 Total facilities applied

57% Certified No Exposure

43% Permit Coverage

32% Applied online

# By the numbers, continued

1<sup>st</sup>/2<sup>nd</sup> Most popular MPCA weblink

5-100 Calls per day

2500+ Youtube video views

12 workshops, hundreds trained

1 Program staff, 1 support staff

# Outdoor materials/activities:

- **Outdoor** dumpsters
- **Outdoor** transfer of materials
- **Outdoor** storage of waste/parts
- Parts of facility that need erosion/sediment control
- Areas where equipment & waste trucks enter/exit
- **Outdoor** vehicle & equipment maintenance, fueling



# General Permit Requirements

## **SWPPP** **BMPs:**

- Foundation of permit & compliance
- Facility-specific details of managing stormwater
- Living document

## **BMPs** **Monitoring:**

- Manage industrial stormwater discharges
- Monitoring results indicate if BMPs are effective
- If facility doesn't pass, modify BMPs & re-sample

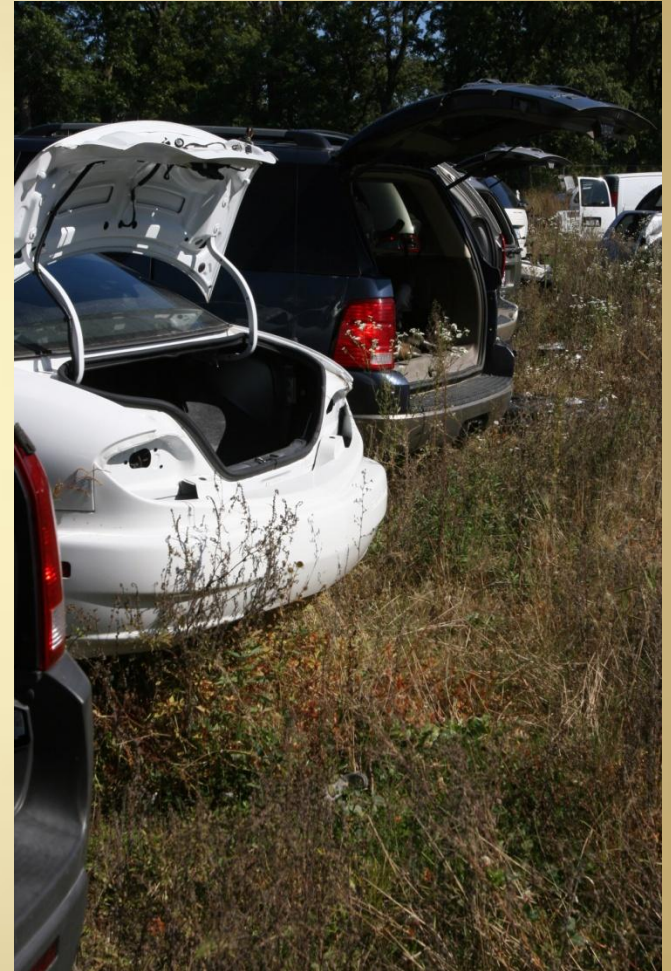
# Specific permit requirements

## Stormwater Control Measures

- Good housekeeping
- Eliminate/reduce exposure
- Store salt correctly
- Prevent erosion, control sediment
- Manage runoff
- Inspect facility
- Perform required maintenance
- Eliminate non-stormwater discharges
- Create:
  - Spill Prevention and Response Procedures
  - Mercury minimization plan
  - Employee training program

# Annual Permit Requirements

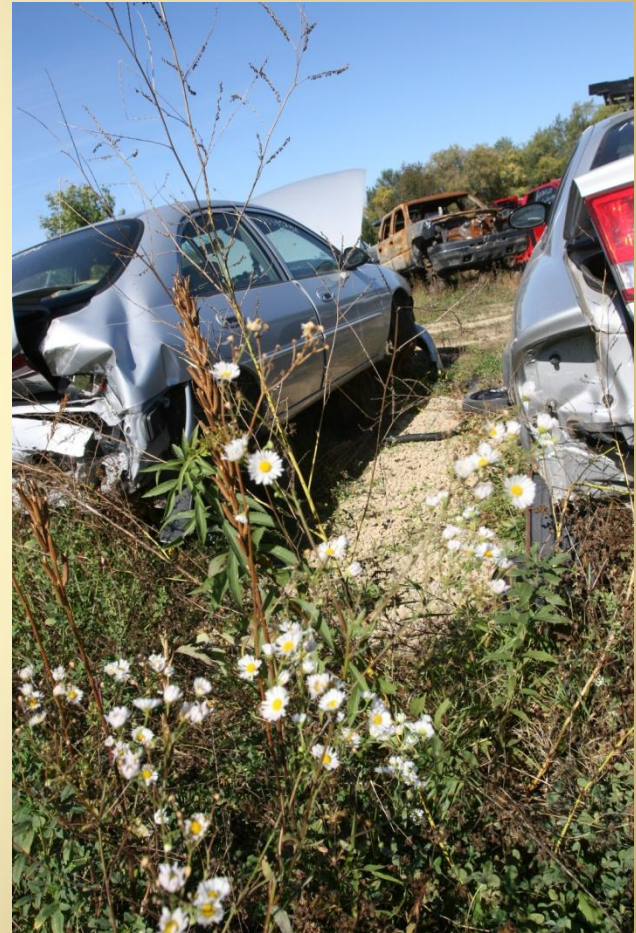
- Monthly inspections
- Annual SWPPP review
- Annual training
- Annual fees
- Annual report
- Annual impaired waters review





# Sector-specific requirements

- Employee training
- Good housekeeping
- Inspections
- Spills and leaks
- Facility map
- Potential pollution sources



# What is No Exposure?

All significant industrial materials and activities are protected from:

- rain
- snow
- snowmelt
- run-off

by a storm resistant shelter



**Uncommon for Sector M facilities to qualify; 3 certified.**

# Sampling/Monitoring

## Benchmark Monitoring Requirements

All Permittees must **sample**

Are **action levels**, not violations

Pass in year 2?	Done monitoring for <b>permit cycle</b>
Exceed?	Modify BMPs; sample again
Discharge to impaired waters and do not pass?	Timeline shortened

# Monitoring: 6 parts

1. Who needs to monitor?
2. What do I need to monitor?
3. When do I take my sample?
4. Where do I take my samples?
5. How do I sample?
6. How do I report my sampling results?



# Parameters: where to find them

Within Part VII of the permit: “Sector-Specific Requirements”

Pages 101-105 for Sector M

**Tip:** Step 7 of “Steps to Compliance” has all sector-specific requirements, including monitoring parameters



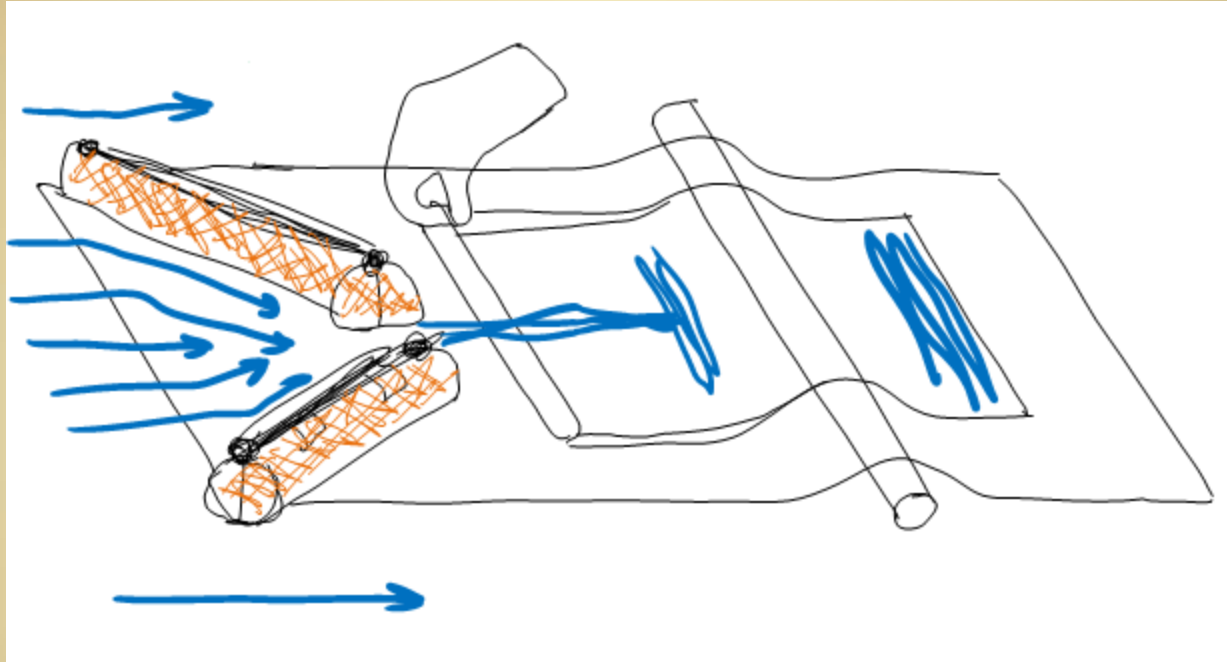
# Common monitoring locations

- Pipe sampling
- Manhole
- Ditch or swale
- Sheet flow
- Ponds
- Others?



Know your monitoring locations and their unique qualities

# Sheet flow



- Concentrate stormwater with sand bags as berms
- Install a shovel handle or other device to intercept flow

Watch the online sampling  videos!

# Common sampling mistakes



**Never let lid of container touch the ground**



**Never sample stagnant water**



**Always wear gloves**



**Never touch opening of bottle**



**Never overfill bottles**



# Benchmark reporting

## Stormwater monitoring report (SWMR)

- Reporting is a permit requirement
- **Aways report, even if “no flow/discharge”**
- Printed from the web, forms are personalized
- mg/L unless sampling for pH
- Postmarked by the 21<sup>st</sup> day of the month following the sampling interval

# Benchmark Value Exceedances

- Results are based on “year 2” average
- Exceedances are not a permit violation
- Not responding to the exceedance: violation
- Make BMP changes in “year 3” and sample again in “year 4” (only for exceeded pollutants)
- Exceed in year 4? Submit “BER”, make BMP changes immediately, sample in year 5 (individual permit req’d?)

# Sector M by the numbers

111 Regulated facilities

2048 Rows of monitoring data

58% “No flow” rows

37% Rows of exceedances

63% Values that haven't exceeded

# Sector M Exceedances

Parameter	Exceedance Range	Permit value
Aluminum	1.63-52mg/L	1.5 mg/L
Ethylbenzene	3.0 mg/L	2.7mg/L
Iron	1.04-289mg/L	1.0 mg/L
Lead	0.183-3mg/L	0.164mg/L
TSS	108-5,070 mg/L	100 mg/L
Xylene	3-3.23mg/L	2.8 mg/L

# BMP options for exceedances

- BMP Guidebook
- Sector/pollutant-specific guidance
- MPCA site-specific guidance
- Step 12 of website
- EPA Fact Sheets
- Attend University of Minnesota Training

College of Food, Agricultural and Natural Resource Science > Department of Bioproducts and Biosystems Engineering


Erosion and Stormwater Management

Certification Program



# Online tools

[www.pca.state.mn.us/industrialstormwater](http://www.pca.state.mn.us/industrialstormwater)

- Industrial Stormwater Fact Sheets
- Steps to compliance
- Sector-specific requirements, guidance
- E-newsletters
- Sampling Manual
-  Sampling Videos
- BMP Guidebook



# Permit information access



## Industrial Stormwater Permit Information Access

Permit ID:

Facility Name:

Owner Name:

City:

County:

Business Sector:

Status:

Type:

Permit Authorization Date Range:  -

Search

Reset

**Search Tips:** There are sometimes variations on how an "Owner" name was entered into the system: For example: Minnesota Mining and Manufacturing, 3M, 3M - Alexandria, 3M - Building 76. Be aware that multiple searches with different criteria may be needed.

<http://cf.pca.state.mn.us/water/stormwater/isw/search.cfm>

# Industrial Stormwater Program

[www.pca.state.mn.us/industrialstormwater](http://www.pca.state.mn.us/industrialstormwater)

## Stormwater Hotline

651-757-2119

800-657-3804

---

Melissa Wenzel, Technical Staff

651-757-2816

---

Todd Smith, Engineer

651-757-2732

---

Kristin Kirchoff, Support Staff

651-757-2089

---

[iswprogram.pca@state.mn.us](mailto:iswprogram.pca@state.mn.us)

---



Thank you for helping protect  
Minnesota waters!

